

Name: _____ Date: _____ Period: _____

Biology 2nd 9 Weeks, Week 2.2-2.3 Warm-up 3

Directions: Answer the following questions using your notebooks, and provide a justification for each question.

1. In a multicellular organism, organs carry out a variety of life functions. In a single celled organism, these functions are performed by _____
 - a. organelles
 - b. organs
 - c. organ Systems
 - d. tissues

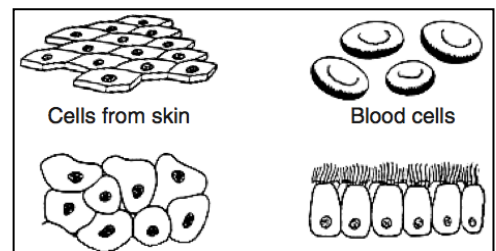
Justification—

2. Which sequence shows the correct pathway through which waste travels in the excretory system?
 - a. renal artery – kidney – ureter – bladder – urethra
 - b. Kidney – urethra – ureter – renal artery – bladder
 - c. urethra – kidney – bladder – ureter – renal artery
 - d. Renal vein – bladder – kidney – ureter – urethra

Justification –

3. Some human body cells are shown in the diagrams to the right.. These groups of cells represent different-

- a. organelles that carry out different functions
- b. organs that help to carry out a specific life activity.
- c. systems that are responsible for a specific life activity.
- d. tissues in which similar cells function together.



Justification –